

BFB NATURAL TRUMPET™



Experience what makes brass unique from every other instrument family

www.brassforbeginners.com

BFB NATURAL TRUMPET™

WHAT IS A NATURAL TRUMPET?



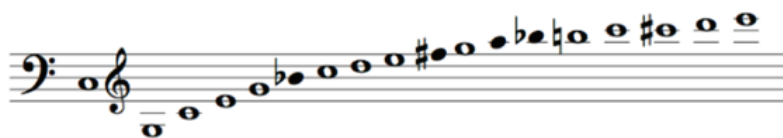
A natural trumpet (often referred to as a Baroque trumpet) is a long, double-folded trumpet without valves. It was the trumpet used across Europe from the 15th through the mid 19th centuries, and is a common ancestor to all modern brass instruments. It is the trumpet that composers like Bach, Handel, Mozart, and Beethoven composed for, and has had a resurgence in the past 50 years in the performance of Baroque and Classical-era music.

Because it is roughly twice the length of a modern trumpet or bugle pitched in the same key, its harmonic series sits an octave lower, making it possible to play several notes in the middle and lower registers, as well as a complete scale in the upper register (see below).

Harmonic Series of a Modern Trumpet Pitched in C (approx. 4 ft in length):



Harmonic Series of a Natural Trumpet Pitched in C (approx. 8 ft in length):



WHY THE NATURAL TRUMPET?

The natural trumpet is an ideal pedagogical tool for both **teaching** and **learning** the fundamentals of brass playing because it limits the variables. It puts the focus on the development of fundamental techniques and aural skills which are critical for success on all modern brass instruments. Furthermore, its simplicity and approachability makes it an ideal teaching/learning tool for brass players and non-brass players alike.

- The absence of valves/slides limits distractions, helping students focus on the fundamentals of sound production, articulation, and navigation of the harmonic series.
- Limiting the sound palate to the naturally occurring harmonic series helps students hear and navigate important intervallic relationships which are inherent to all brass instruments.
- The natural trumpet is an extremely effective tool for a “learn by ear” approach which helps students to develop the aural skills critical for overall musical development.
- The natural trumpet is particularly effective in group instruction. Having students “on the same page,” in the same key, with the same instruments, allows for more efficient and in-depth work on pedagogical issues such as embouchure formation, breathing, and articulation.
- Because all notes in the middle and lower register of the natural trumpet form consonant (non-dissonant) intervals, students can play whichever notes are most comfortable at first, giving them an opportunity to gain confidence in sound production while they develop the more precise skills necessary to match specific notes.

BFB NATURAL TRUMPET™

The *BfB Natural Trumpet*™ was designed with the help of engineers and music acousticians to sound and play like an authentic natural trumpet. It is a lightweight, durable, low-cost instrument with numerous pedagogical applications for teachers, students, and developing brass players.

It weighs under 2 lbs., making it easy for even the smallest hands to hold, and is built to last, with no moving parts* that can become lost or damaged. Pitched in C (A=440), it can play with other general music classroom instruments such as Orff and recorders. *The BfB Natural Trumpet*™ is manufactured with FDA compliant ABS in the USA, meeting NSRL levels of Prop 65.

Although the *BfB Natural Trumpet*™ was designed as a whole-class beginning brass instrument, it is equally effective in private instruction. French horn and low brass mouthpieces designed for use with the *BfB Natural Trumpet*™ can be used by any/all brass players to teach and to play.

*Note: the BfB Nat™ does not have a tuning slide.



Brass for Beginners LLC

7650 Austin Ave., Skokie, IL 60077

sales@brassforbeginners.com

Phone: 833-SALPINX (725-7469)